



CDPS GENERAL CONSTRUCTION PERMIT

COR40000 Modification 1

September 23rd, 2020 CSC General Membership Meeting

CDPS GENERAL CONSTRUCTION PERMIT

MODIFICATION 1

TIMELINE

- *Posted September 13, 2020*
 - *Comments Due to CSC:
October 5th, 2020*
- *Comments Due to the Division:
October 12th, 2020*

SUBMISSION FORMAT

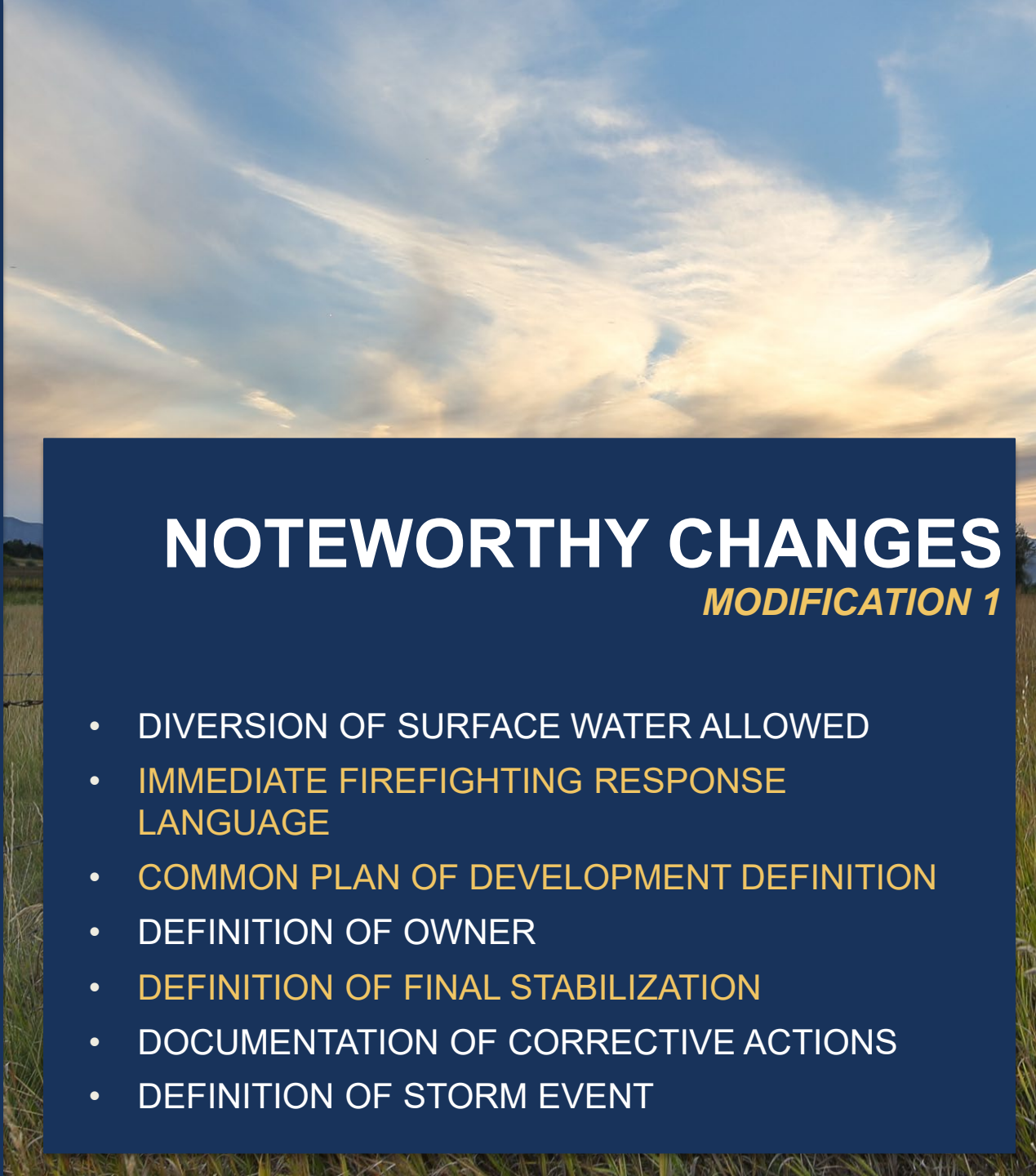
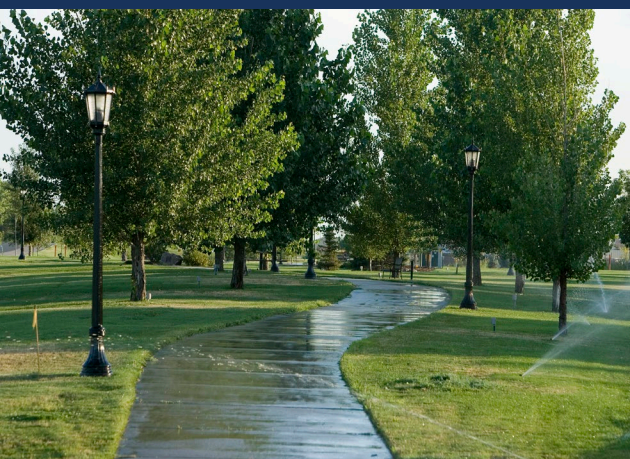
*New Google Form
Google vs. Non Google Email*

DOCUMENTS ON CSC WEBSITE

<https://colorado-stormwater-council.org/documents/84>

*Red Lined COR40000 Permit
Fact Sheet*

*CSC Draft Comments (most recent)
FAQ of New Google Form Submission*



NOTEWORTHY CHANGES

MODIFICATION 1

- DIVERSION OF SURFACE WATER ALLOWED
- IMMEDIATE FIREFIGHTING RESPONSE LANGUAGE
- COMMON PLAN OF DEVELOPMENT DEFINITION
- DEFINITION OF OWNER
- DEFINITION OF FINAL STABILIZATION
- DOCUMENTATION OF CORRECTIVE ACTIONS
- DEFINITION OF STORM EVENT

CDPS GENERAL CONSTRUCTION PERMIT MODIFICATION 1

IMMEDIATE FIREFIGHTING RESPONSE

PERMIT LANGUAGE

c. Emergency Fire Fighting

Discharges resulting from immediate response to emergency firefighting activities are authorized by this permit.

- ii. If applicable, the permittee must remove and properly dispose of any unauthorized release or discharge from the permitted area (e.g., discharge of non-stormwater, untreated stormwater, spill, or leak not authorized by this permit.) The permittee must also clean up any contaminated surfaces, including collected discharge from firefighting activities after immediate, emergency response is complete, to minimize discharges of the material in subsequent storm events.

CDPS GENERAL CONSTRUCTION PERMIT MODIFICATION 1

COMMON PLAN OF DEVELOPMENT

PERMIT LANGUAGE

- (2) Common Plan of Development or Sale - A contiguous area where multiple separate and distinct construction activities may be taking place at different times on different schedules, but remain related. The Division has determined that “contiguous” means construction activities located in close proximity to each other, -(typically, but not limited to, within ¼ mile). Construction activities are considered to be “related” if they share the same development plan, builder or contractor, equipment, storage areas, etc. “Common plan of development or sale” includes construction activities that are associated with the construction of field wide oil and gas permits for facilities that are related.

CDPS GENERAL CONSTRUCTION PERMIT MODIFICATION 1

FINAL STABILIZATION

PERMIT LANGUAGE

- (b) Final stabilization must be implemented for all construction sites covered under this permit. Final stabilization is reached when (1), (2), and (3) below are complete:
- (1) ~~a~~ All ground surface disturbing activities at the construction site construction activities are complete.; ~~and,~~
 - (2) Permanent stabilization methods are complete. Permanent stabilization methods include, but are not limited to, permanent pavement or concrete, hardscape, xeriscape, stabilized driving surfaces, vegetative cover, or equivalent permanent alternative stabilization methods. The division may approve alternative final stabilization criteria for specific operations. Vegetative cover must meet the following criteria:
 - a. Evenly distributed perennial vegetation, and
 - b. Coverage, at a minimum, equal to 70 percent of what would have been provided by native vegetation in a local, undisturbed area. ~~for all areas of ground surface disturbing activities, either a uniform vegetative cover with an individual plant density of at least 70 percent of pre-disturbance levels is established, or equivalent permanent alternative stabilization methods are implemented. The division may approve alternative final stabilization criteria for specific operations.~~